



DESIGN WITH WATER

Lindsey Fryett Jerke
Michele Campbell

Landscape &
Urban Design

DIALOG[®]

URBAN ECOSYSTEM SERVICES

PROVISIONING

Goods obtained from ecosystems

Food Supply
Water Supply

REGULATING

Benefits obtained from ecosystem processes

Temperature Regulation
Noise Pollution
Air Purification
Stormwater Management
Waste Treatment
Pollination

CULTURAL

Intangible benefits from ecosystems

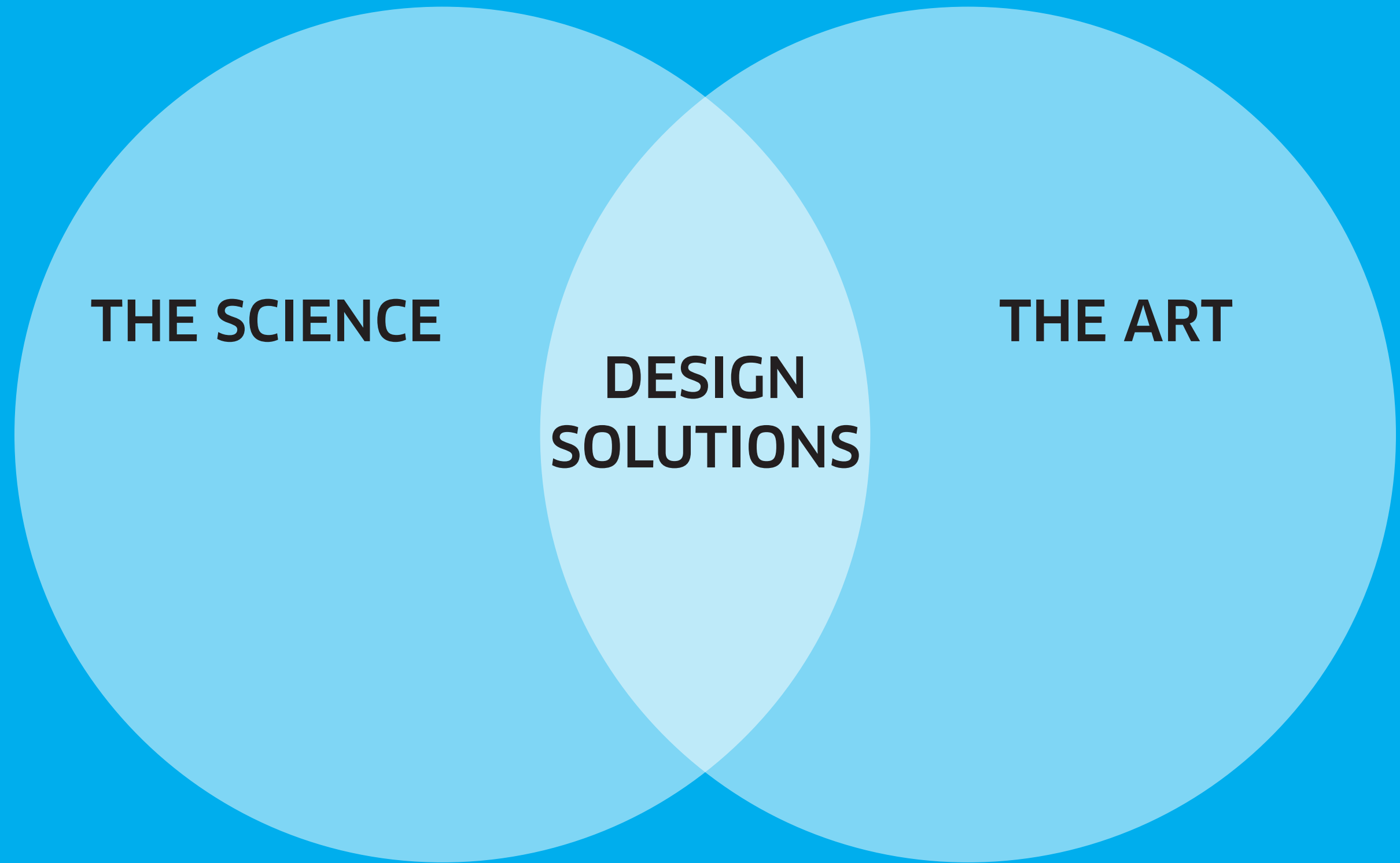
Recreation
Aesthetic Benefits
Cognitive Development
Social Cohesion

HABITAT

Ecological functions underlying the production of ecosystem services

Habitat for Biodiversity

Adapted from: Elmqvist, T. et al. (eds.). 2013.
Urbanization, Biodiversity and Ecosystem Services:
Challenges and Opportunities: A Global Assessment



“Some would argue that aesthetics has little if anything to do with the ecology of landscapes.... [however] landscape aesthetics provides a critical linkage between humans and ecological processes”

**The shared landscape: what does aesthetics have to do with ecology?
Paul H. Gobster - Joan I. Nassauer - Terry C. Daniel - Gary Fry
24 May 2007**

Brooklyn Bridge Park

New York City

Michael Van Valkenburgh



Brooklyn Bridge Park

New York City



Michael Van Valkenburgh



Image credit: Michael Van Valkenburgh and New York Times



Chicago Riverwalk

City of Chicago
Sasaki +
Ross Barney Architects

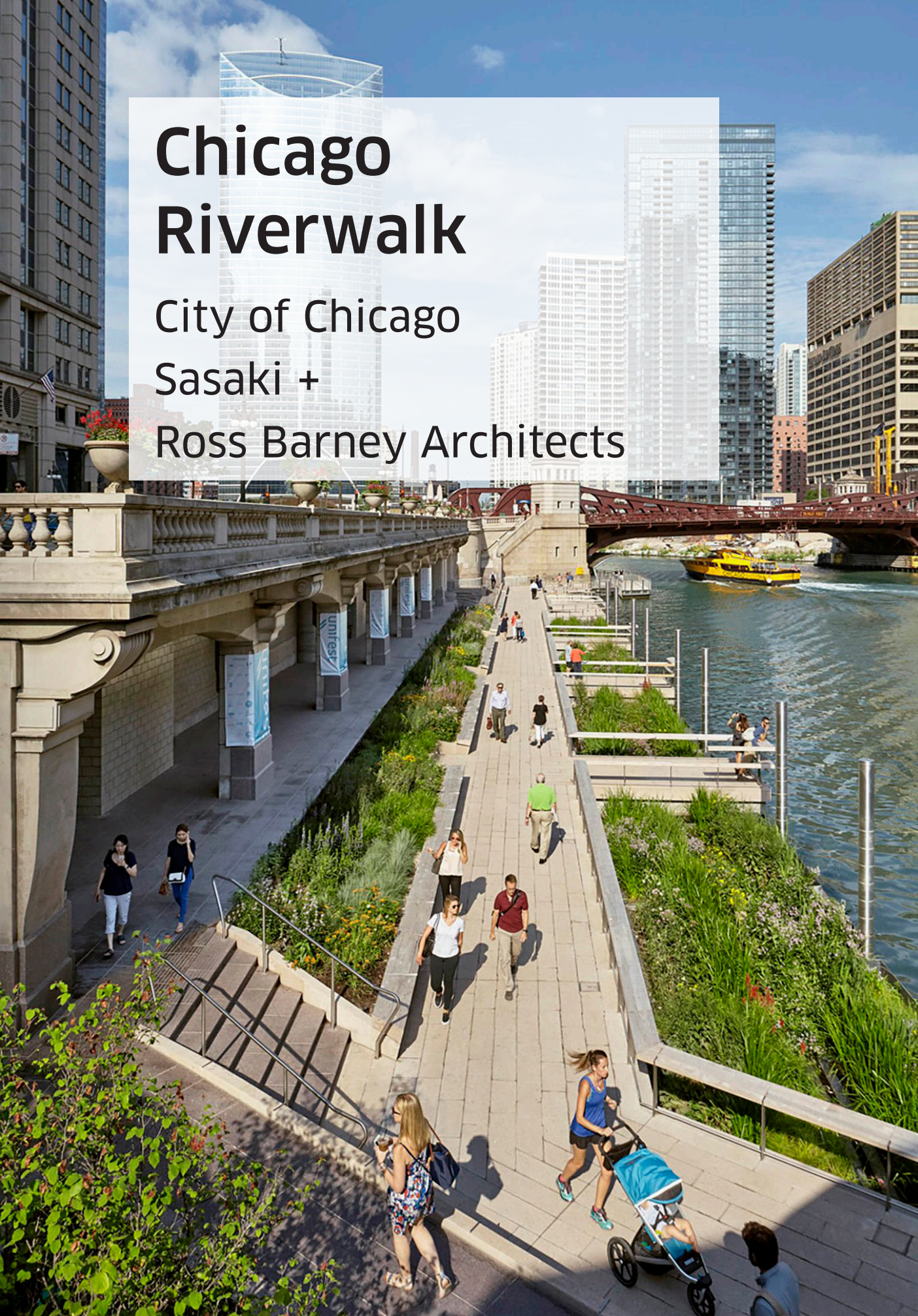


Image credit: Ross Barney Architects

Waterfront Toronto

City of Toronto



Sugar Beach: Claude Cormier



Image credit: Waterfront Toronto



Simcoe Wave Deck: West 8 + DTAH



Don River Naturalization: Michael Van Valkenburgh

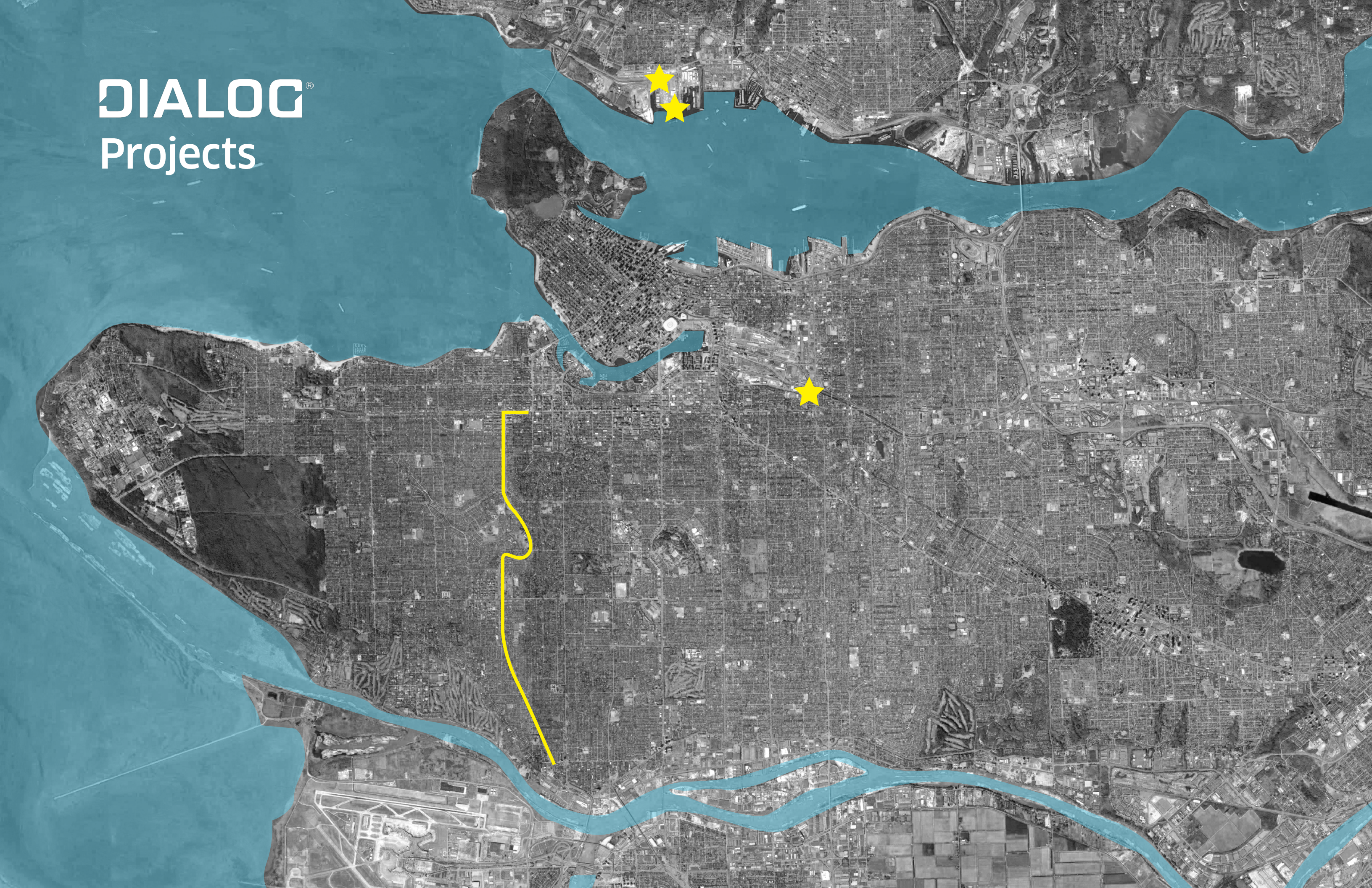
Hinge Park + Habitat Island

City of Vancouver
PWL Partnership



Image credit: Vancouver Courier, Dan Toulgoet, and Wikipedia

DIALOG[®] Projects





ARBUTUS GREENWAY



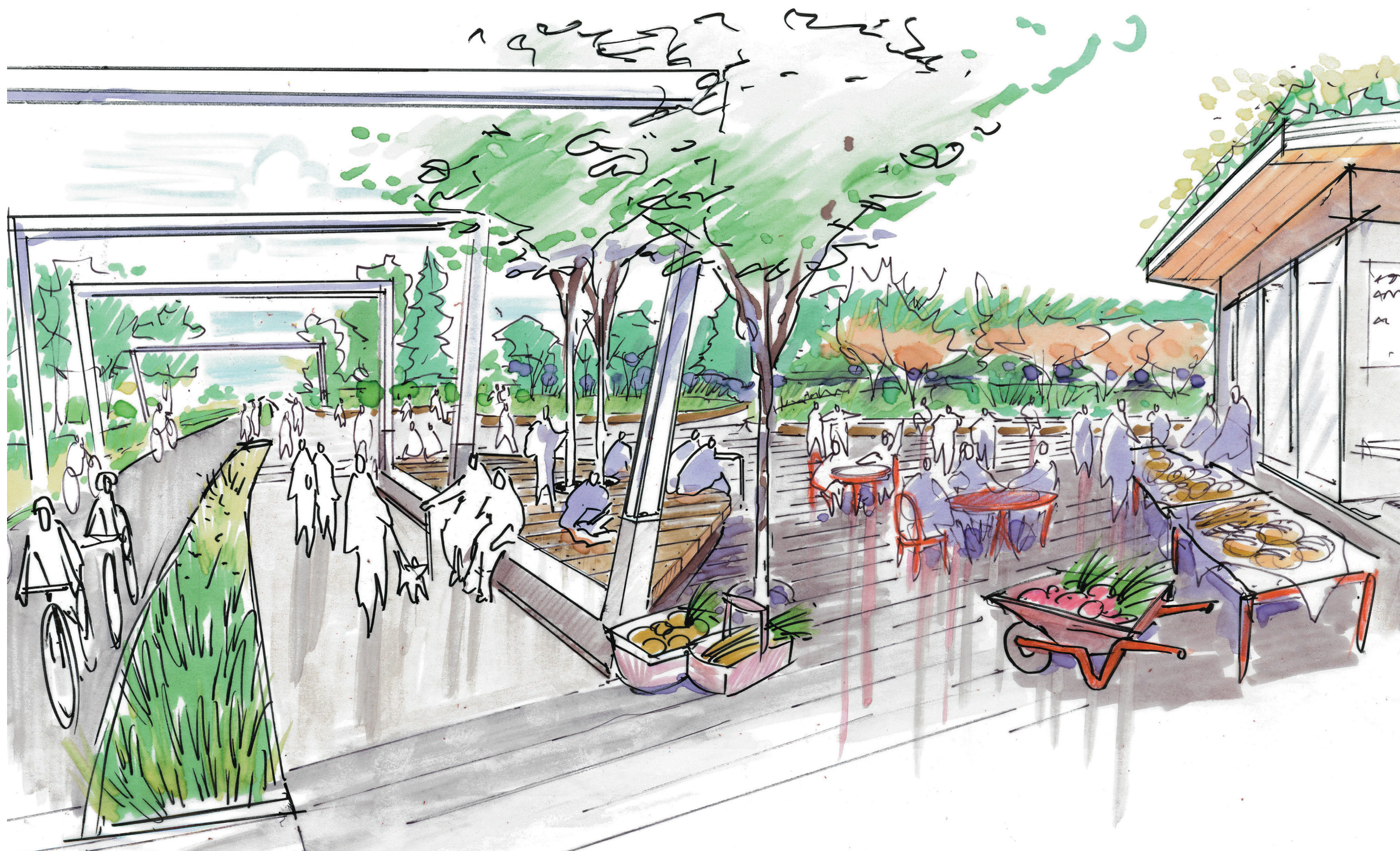
PROJECT OBJECTIVES

- 1 Enable **safe and comfortable** travel between False Creek and the Fraser River for all ages and abilities.
- 2 Ensure the master plan for the future Arbutus Greenway anticipates and dedicates space for a **future streetcar**.
- 3 Provide **flexible public spaces** for people to gather, socialize, support community events, and enable artistic expression.
- 4 Enable **connections** within and across neighbourhoods adjacent to the greenway.
- 5 As the City of Reconciliation, ensure the future Arbutus Greenway will recognize the **rich history and cultural diversity** of the lands.
- 6 Enhance the City's **biological diversity** and urban ecology.
- 7 Engage and **involve local stakeholders** and citywide residents.
- 8 Ensure the Arbutus Greenway design is **resilient and adaptable** to allow for changing circumstances.
- 9 Allow the Arbutus Greenway to be **constructed in phases**, to accommodate a variety of funding strategies and changing circumstances.

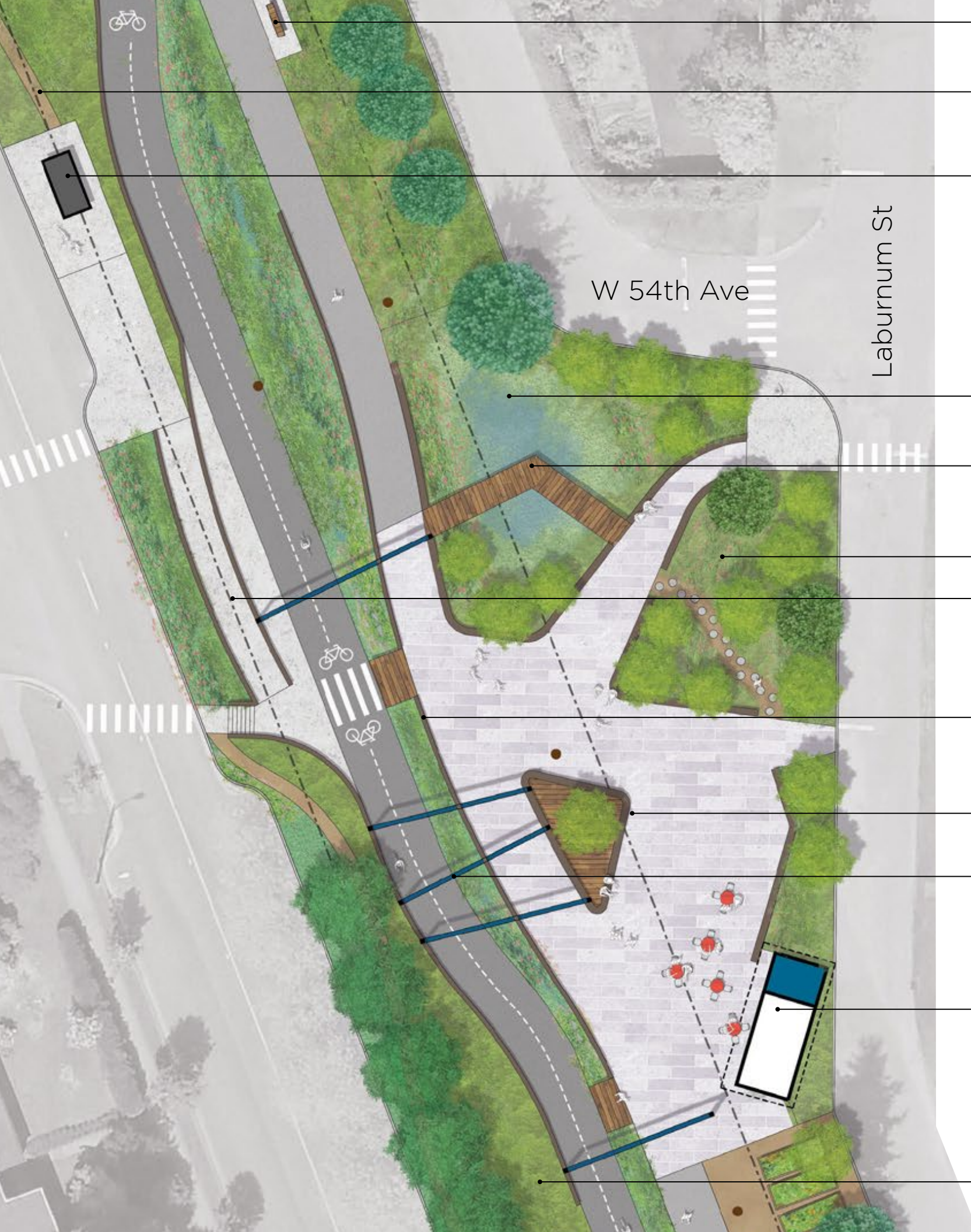


DIALOG®





DIALOG®



Bench

Informal Garden Path

Bus Stop

W 54th Ave

Laburnum St

Green Infrastructure/
Wetland

Boardwalk

Native Trees and Plantings

Accessible Ramp

Retaining Wall

Seating

Architectural Structures
supporting Lighting and
opportunities for Public Art

Community Kiosk
(e.g. Toolshed, Wash
Station, Public Toilet)

Pollinator Wildflower
Meadow

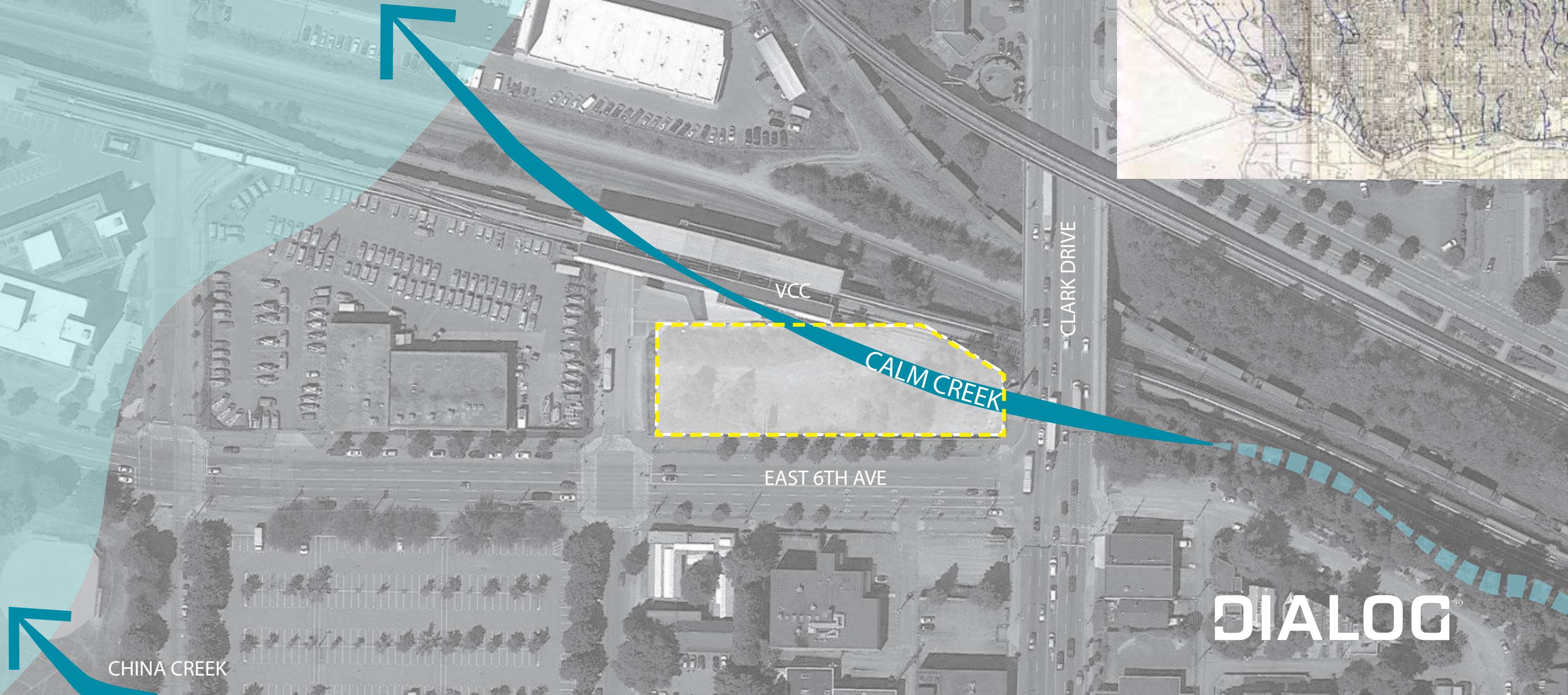
DIALOG[®]

2102 KEITH DRIVE

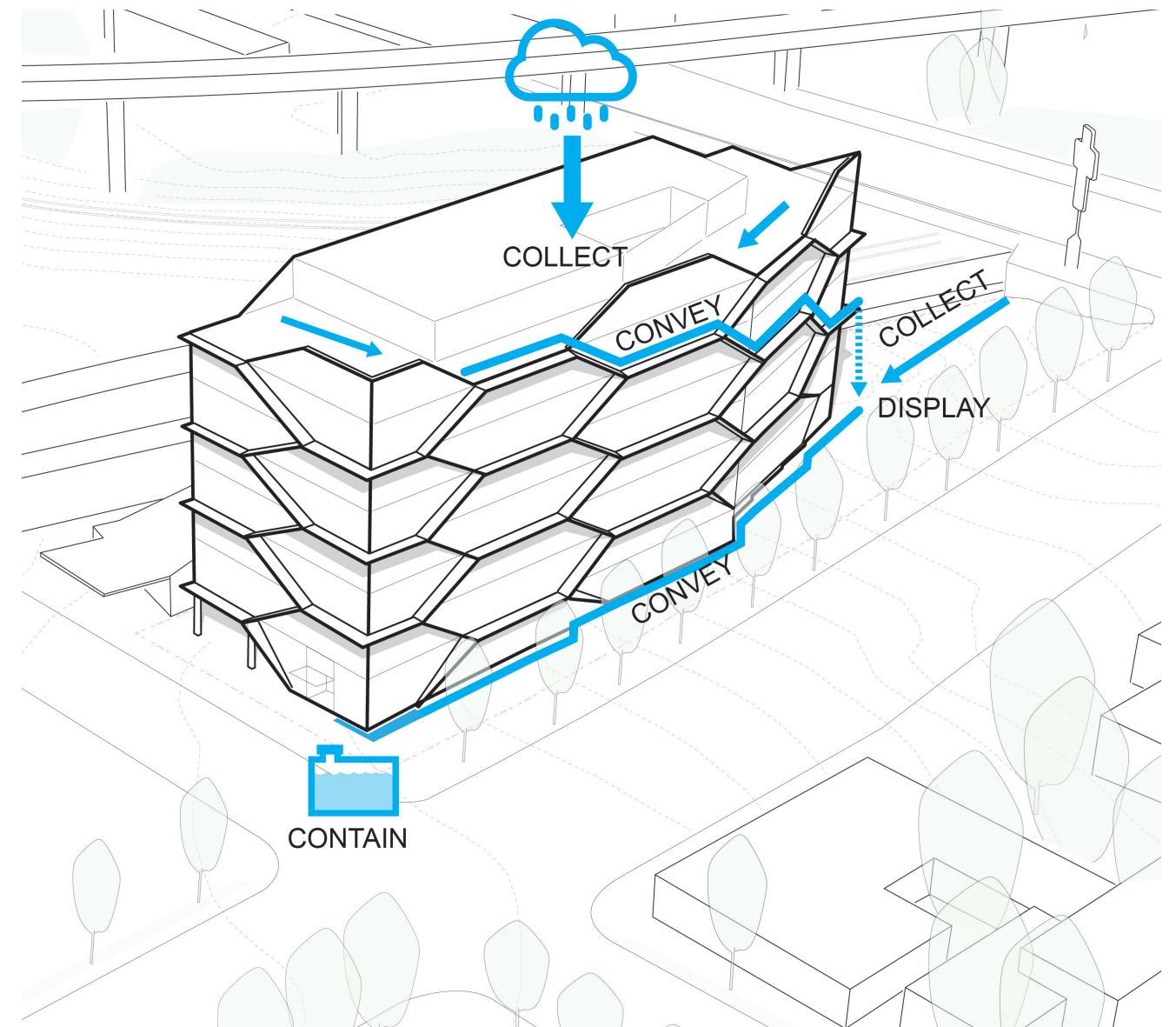


DIALOG®

HISTORIC SHORELINE
OLD STREAMS (1880-1920)



DIALOG®



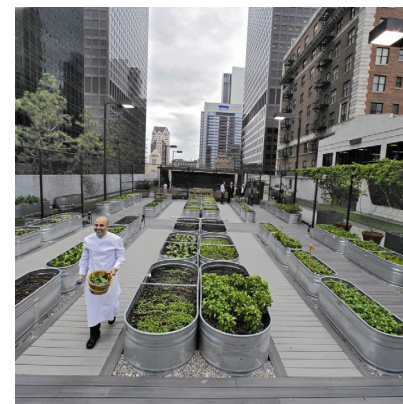
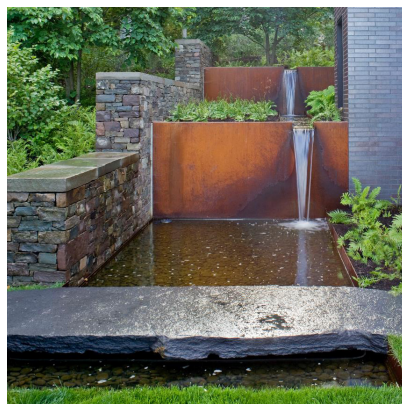
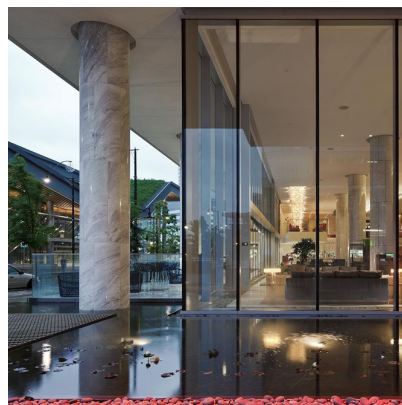
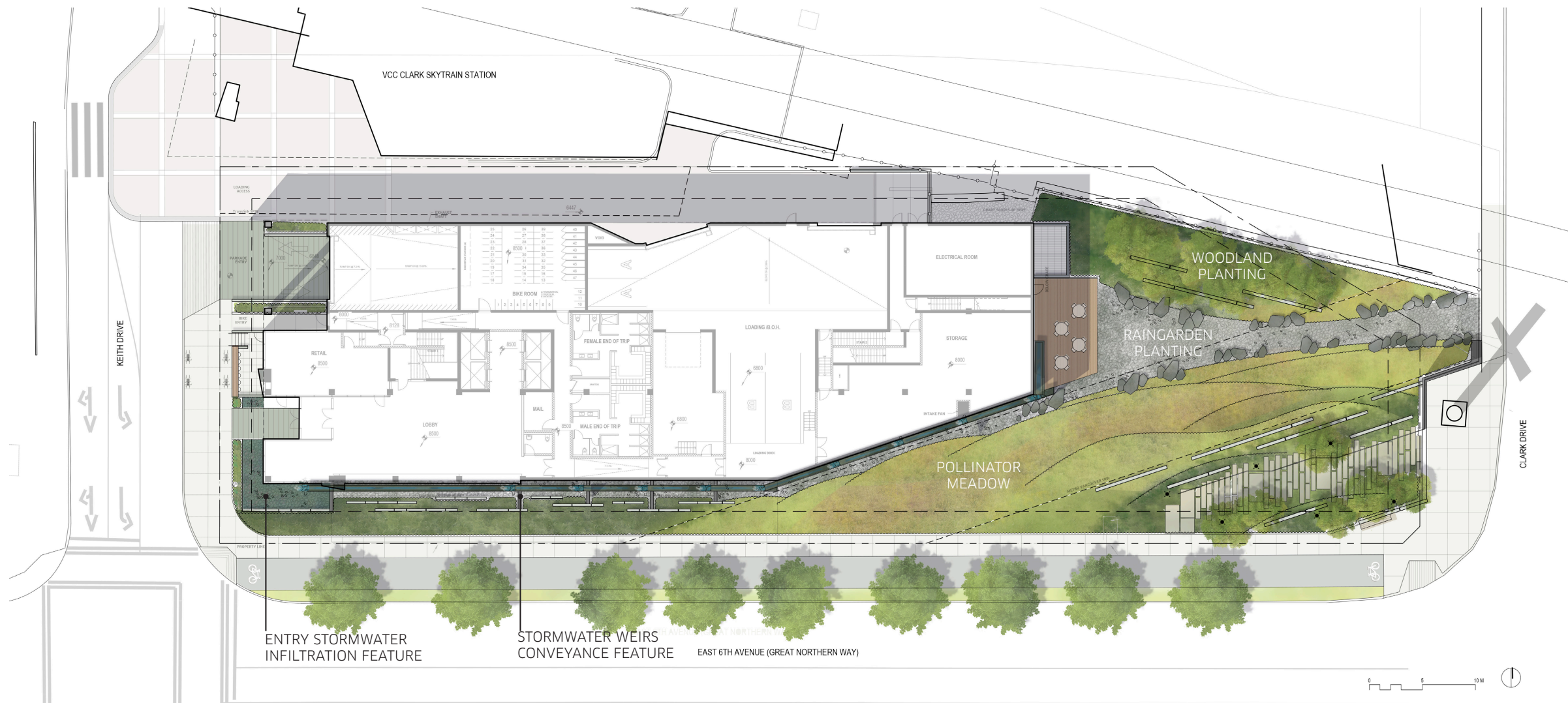
Rainwater Collection Strategy

- Intercept and infiltrate storm runoff from roof into scupper feature
- Re-integrate historic drainage patterns of “calm creek”
- Utilize reflective qualities of water at public art
- Blend edge of building and landscape
- Increase tree planting where possible (outside srw)
- Drought tolerant species at raingardens, native species and grasses
- Species for habitat, pollinators and biodiversity

DIALOG®



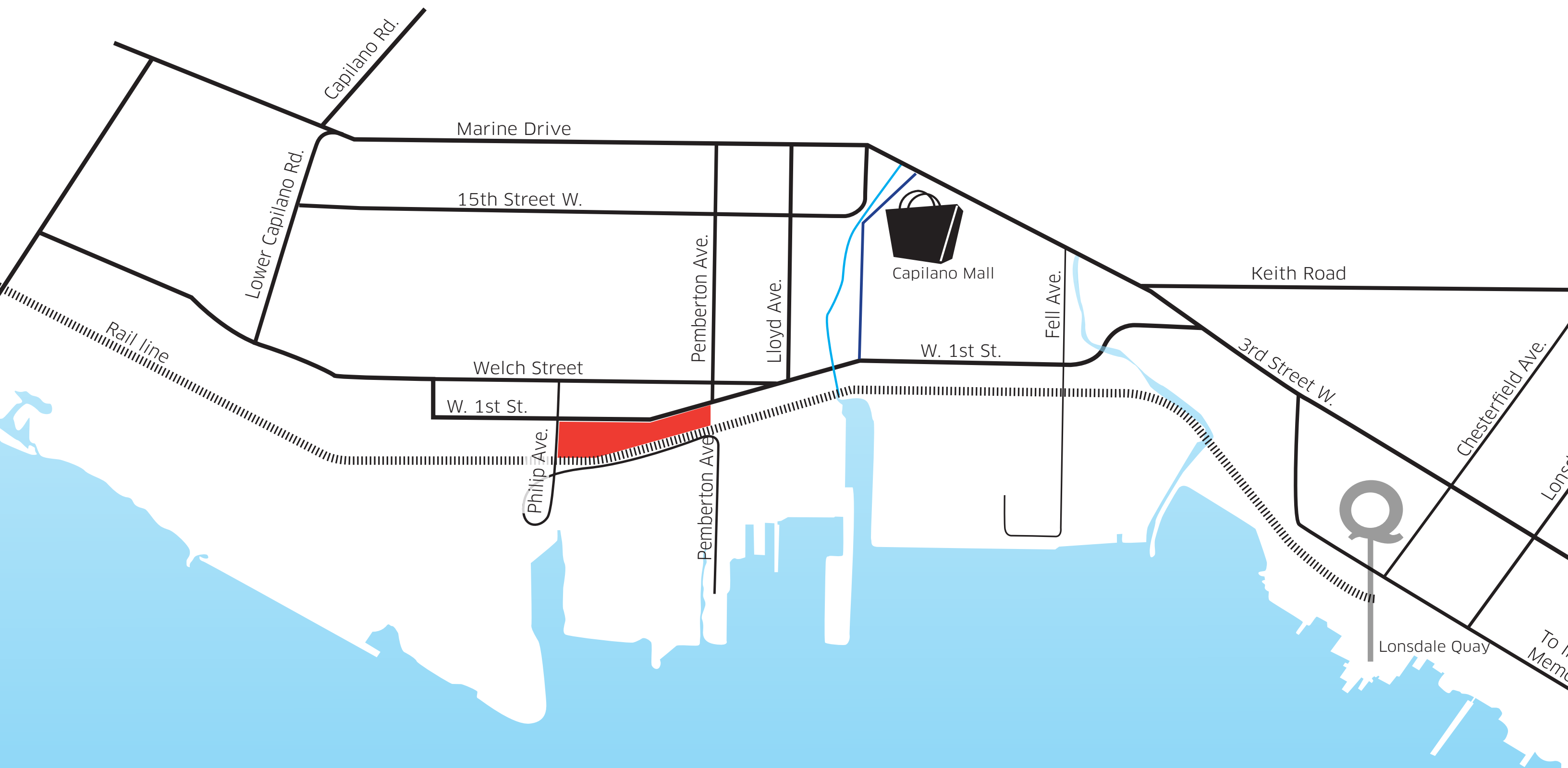
DIALOG®



North Shore Waste Water Treatment Plant

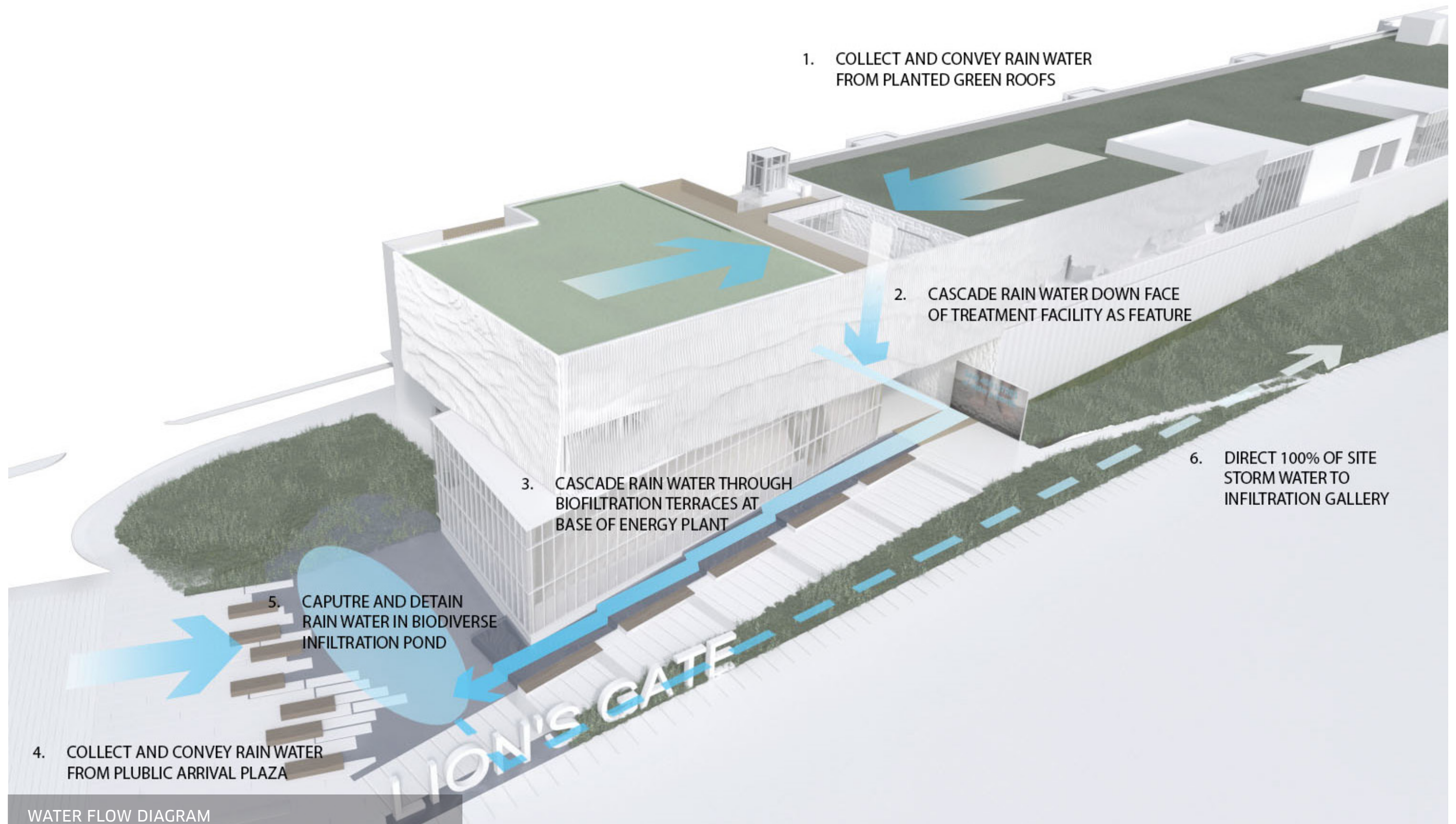


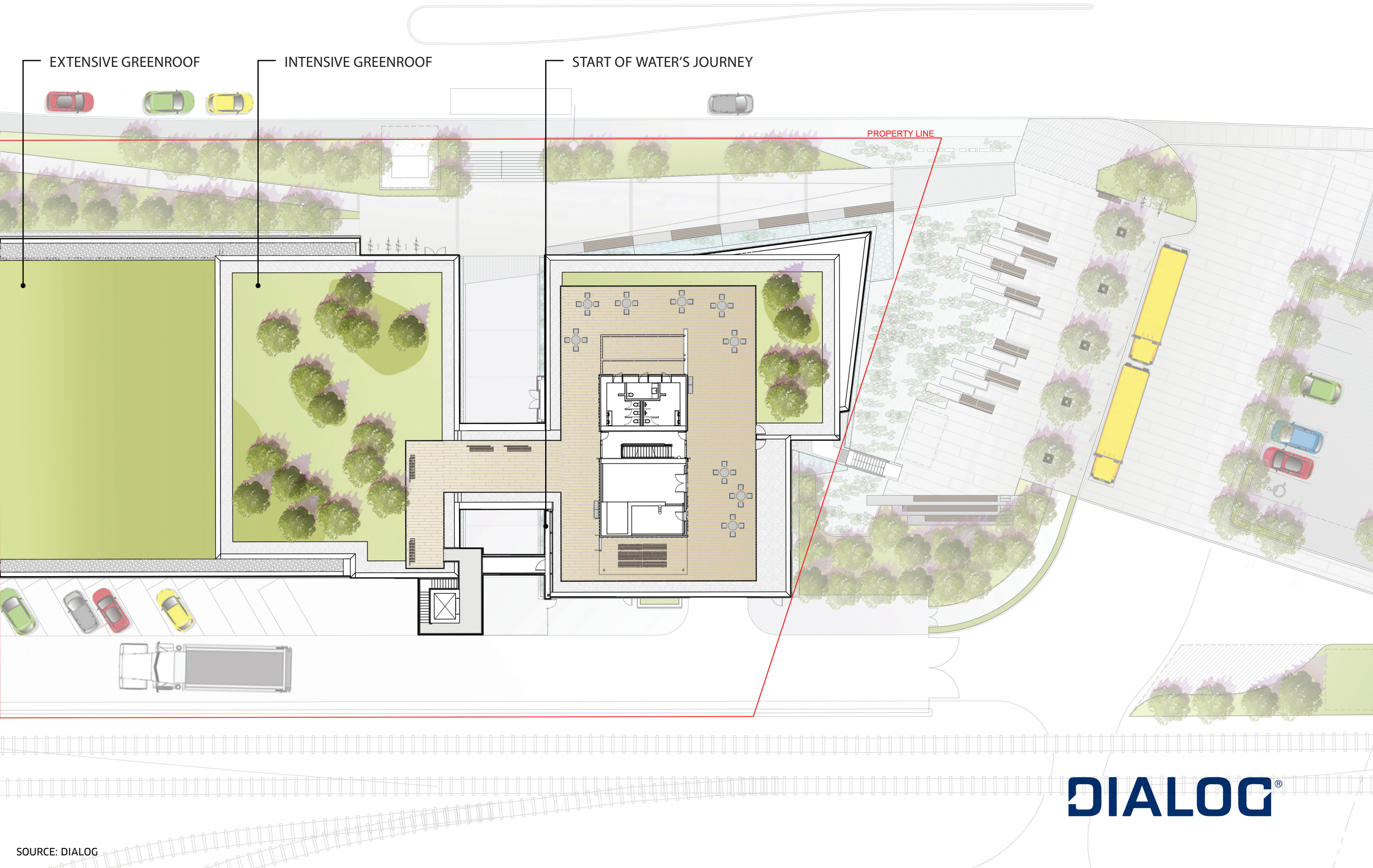
DIALOG®





DIALOG®





EXTENSIVE GREENROOF

INTENSIVE GREENROOF

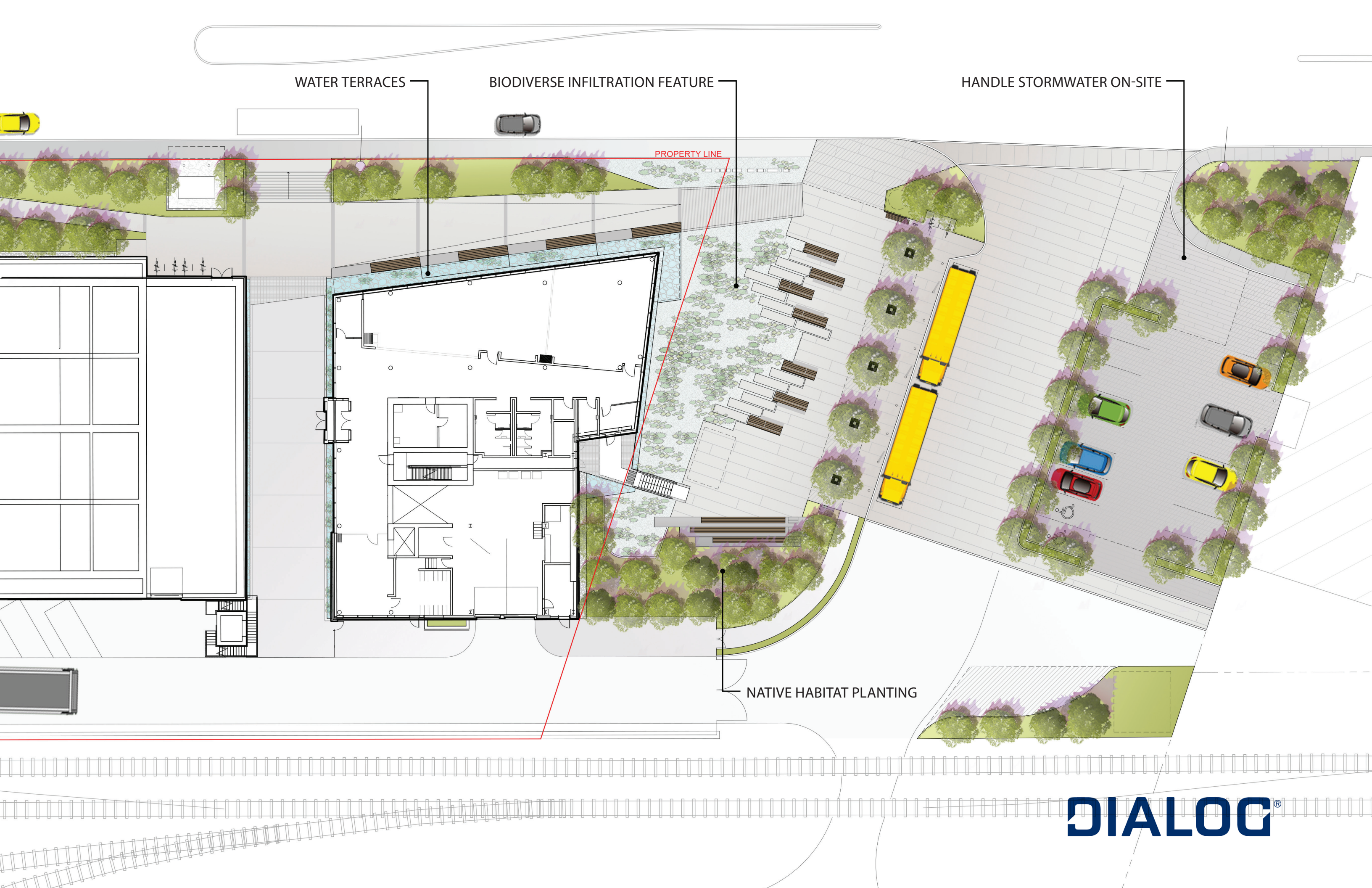
START OF WATER'S JOURNEY

PROPERTY LINE

DIALOG®



DIALOG®



WATER TERRACES

BIODIVERSE INFILTRATION FEATURE

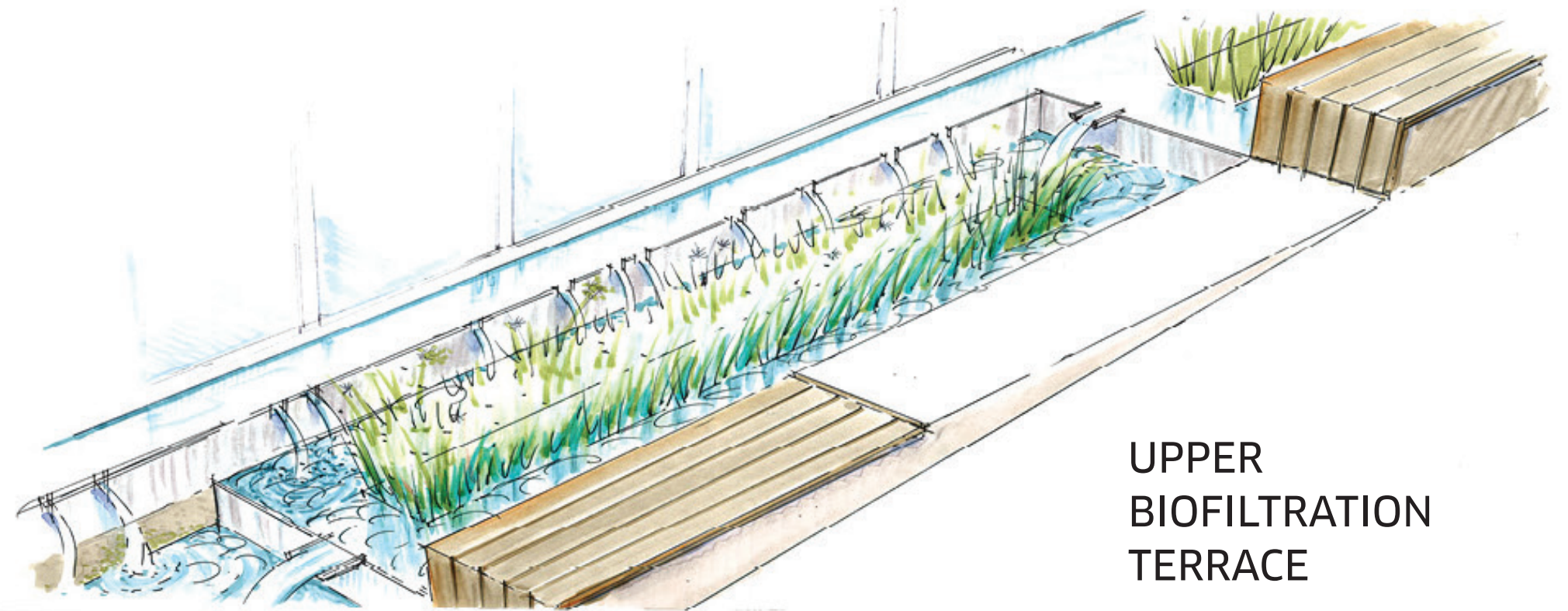
HANDLE STORMWATER ON-SITE

PROPERTY LINE

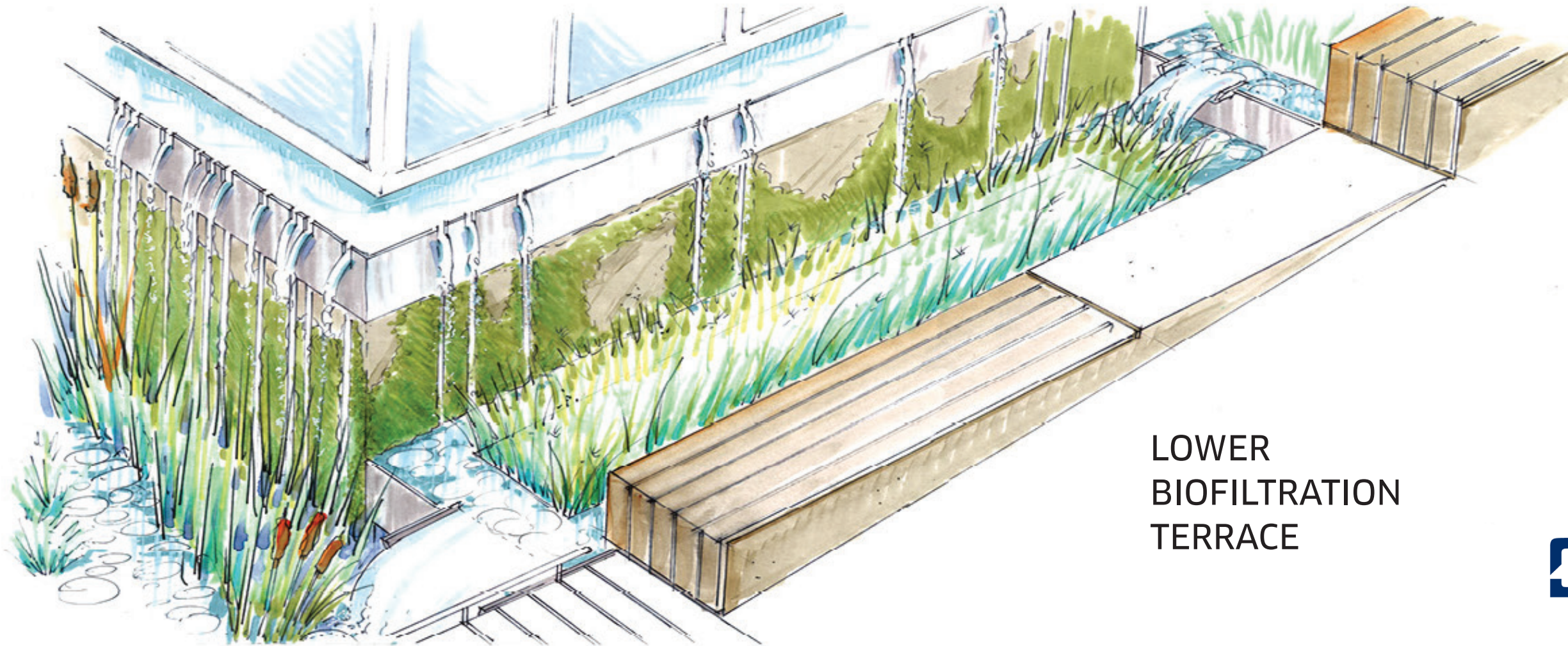
NATIVE HABITAT PLANTING



DIALOG®

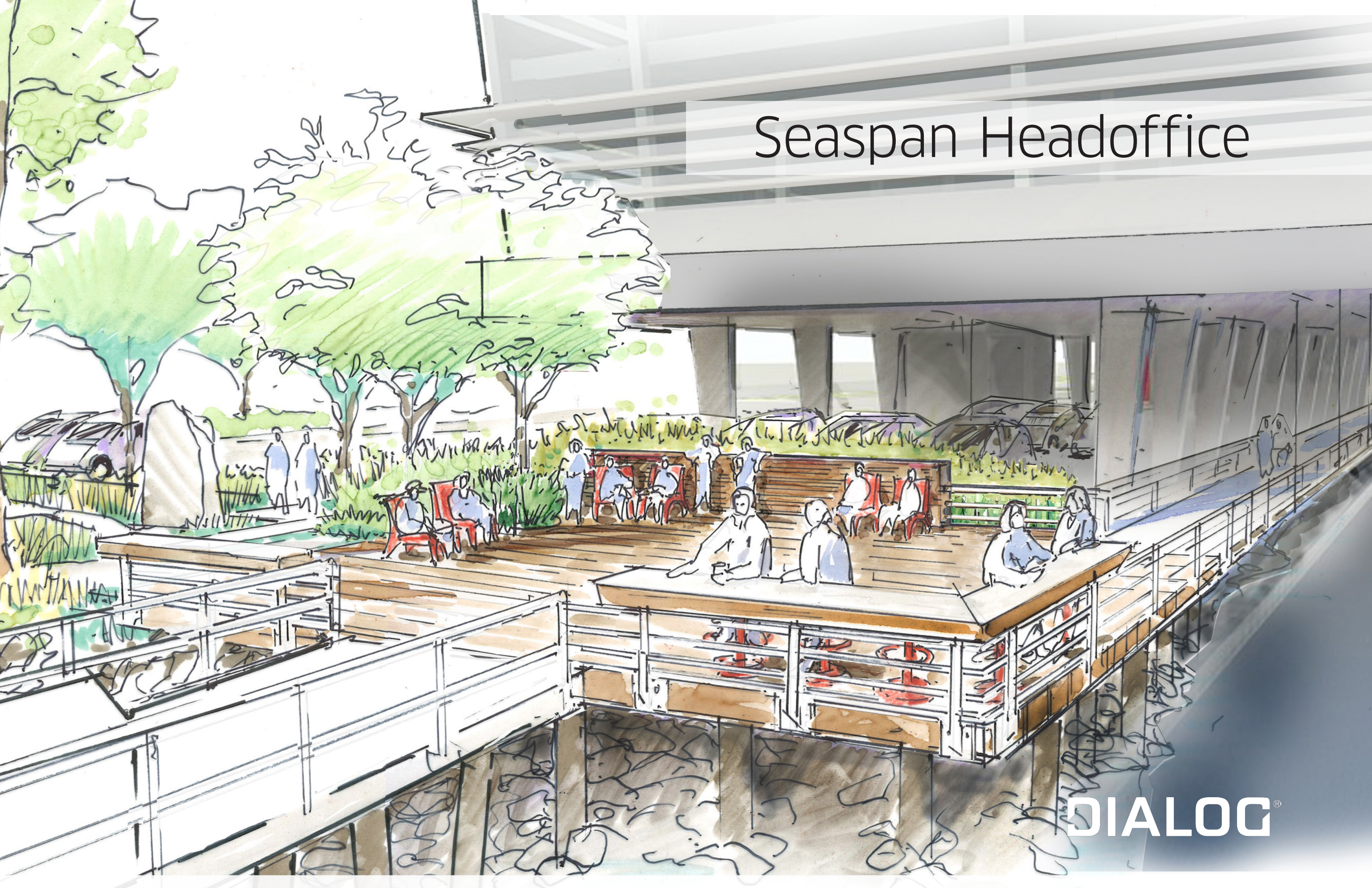


UPPER
BIOFILTRATION
TERRACE

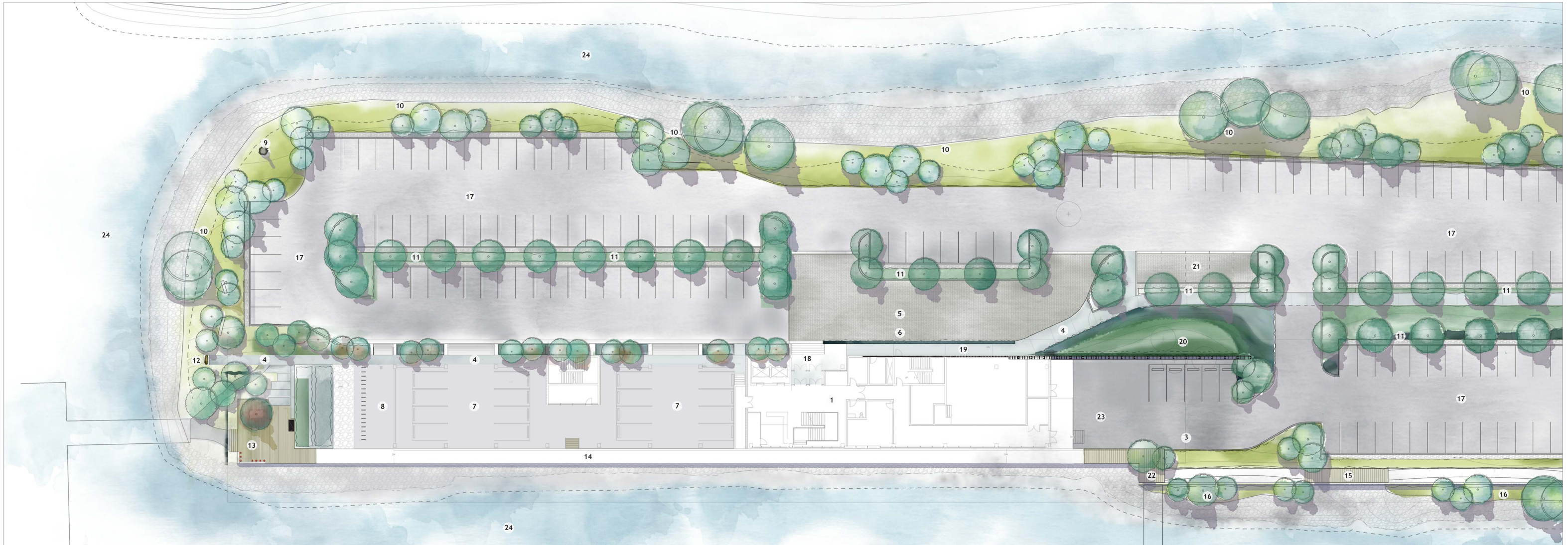


LOWER
BIOFILTRATION
TERRACE

Seaspan Headoffice



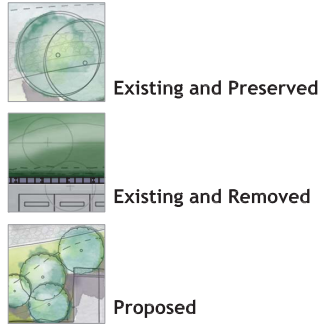
DIALOG[®]



SOUTH SECTION 1:250

- | | |
|---|---|
| 1. Proposed Seaspan Office Building | 13. South Timber Deck Area and Access Point 1. to Barges |
| 2. Proposed Seaspan Storage Building | 14. Suspended Boardwalk under Building Overhang (Refer to Arch) |
| 3. Location of Existing Seaspan Office Building, to be Demolished | 15. Timber Boardwalk along Replanted Foreshore |
| 4. Paved Pedestrian Walkway | 16. New Planted Foreshore Area |
| 5. Feature Paved Arrival Court at Main Entry to Seaspan Office Building | 17. Asphalt paved car park |
| 6. Drop-off Parking Area | 18. Main Entry to Seaspan Office Building |
| 7. South Covered Parking Area | 19. Ramp Access <5% Slope |
| 8. Covered Bike Parking | 20. Feature Planting as Rainwater Bioswale |
| 9. Relocated Osprey Nest | 21. Accessible Parking Area |
| 10. Existing Planted Foreshore Areas (to be enhanced) | 22. Access Point 2. to Barges |
| 11. Bioswale Planting Beds in Parking Areas | 23. Loading Area |
| 12. Existing Memorial Relocated | 24. Burrard Inlet |

Tree Legend





DIALOG®





DIALOG®



Michele Campbell, BCSLA Intern
LANDSCAPE DESIGNER

michelecampbell@dialogdesign.ca

Lindsey Fryett Jerke, BCSLA Intern
URBAN DESIGNER

ljerke@dialogdesign.ca

www.dialogdesign.ca

DIALOG[®]